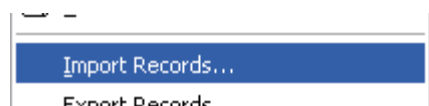


Science and Technology Grade 1 to 8 - Expectations Manual Update for the Official Version 3.0.3 Planner

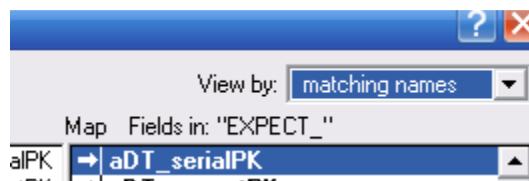
The Science and Technology Grade 1 to 8 Expectations Manual Update updates expectations that could not be imported via the 2007 Update automatic process. The Science 1 to 8 Updates Manual Zip file contains 3 files - a courses file with updated course information for Science and Technology Grades 1 to 8, a sci1_8_complete.fp5 file that contains the updates that will be imported into your Planner and a sci1_8_manual that helps you open the Expectation file that will be updated.

Before beginning this manual update, ensure that you have exited from your Planner application and have downloaded the sci1_8_manual.fp5 file from our website.

1. Unzip the SCIENCE_1to8_UPDATES.zip file into the directory that your Planner has been installed (typically this is PLNR2002 on the root drive of your computer)
2. Run the sci1_8_manual.fp5 file in the Planner directory that the file was unzipped to.
3. Click the EXPECT_ window that has opened with this application.
4. Click the FILE menu in the top left corner.
5. Select IMPORT RECORDS

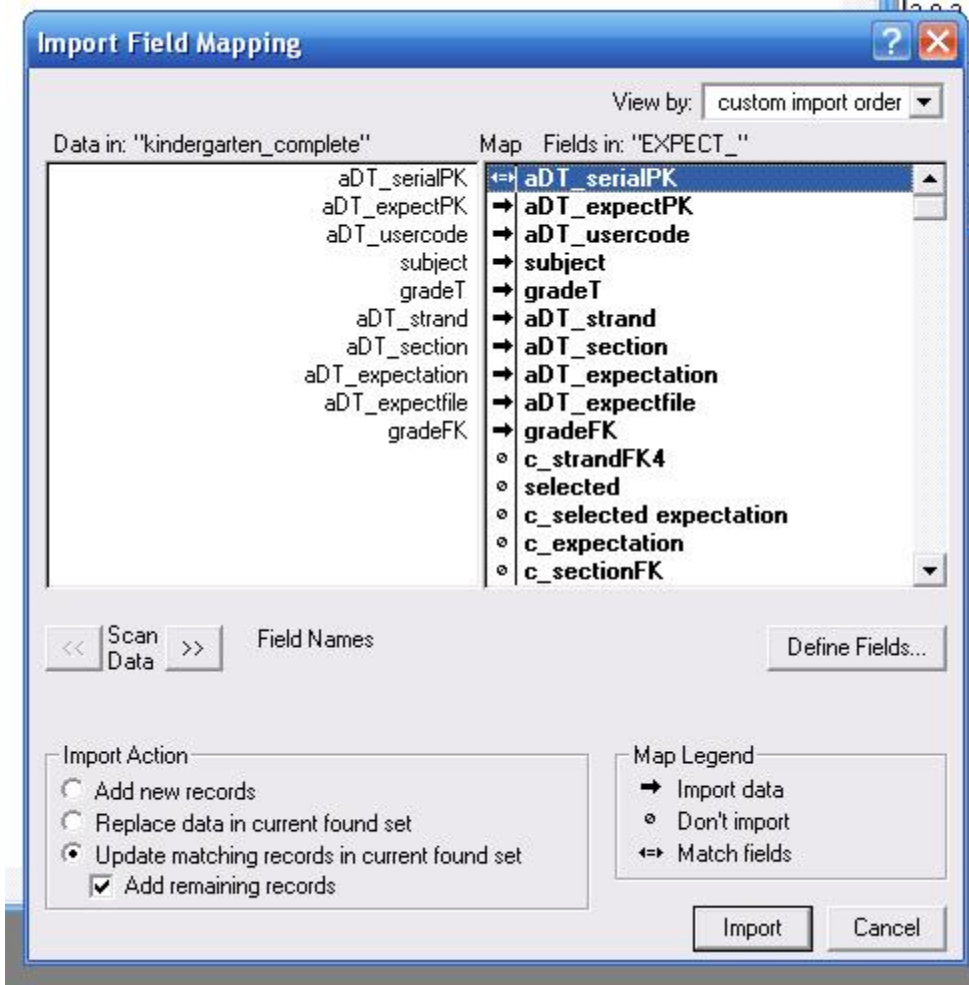


6. Browse for the file sci1_8_complete (this should also be in the Planner directory)
7. In the top right corner, select View by: MATCHING_NAME



- Under IMPORT ACTION, ensure the UPDATE MATCHING RECORDS and ADD REMAINING RECORDS is checked. In the MAP column, click the icon to change to "MATCH FIELDS" between aDT_SERIALPK.

Your import dialogue should look like this:



- Click the IMPORT button in the bottom right. Follow the prompts and click OK for any prompts given.
- Once the process has finished, your Science and Technology expectations will be up to date.
- Close all the .fp5 files and relaunch your Planner.